

TCI 1.01

Published By
JP Software Inc.
P.O. Box 328
Chestertown, MD 21620 USA
(410) 810-8818
Fax (410) 810-0026

Table of Contents

Part I Overview of TCI	2
Part II Starting TCI	2
1 Startup Command	3
2 Desktop Integration	4
Part III TCI Interface	5
1 Creating and changing tabs	6
2 The TCI Window	6
TCI Menus	7
File Menu	8
Edit Menu	8
Tabs Menu	9
Apps Menu	9
Options Menu	9
Help Menu	10
TCI Dialogs	10
Run Program Dialog.....	11
Tool Bar Dialog.....	11
Tool Bar	12
Status Bar	12
Using the Scrollback Buffer	13
Highlighting & Copying Text	13
Resizing the TCI Window	14
3 Using Drag & Drop	14
4 Keys and Key Codes	14
Part IV Configuration Options	15
1 Initialization (.INI) Files	15
2 Directives	16
Directives by Name	17
COMSPEC	18
ConsoleAltKey	18
ConsoleBufferRows	18
ConsoleMouse	18
IBeamCursor	18
InactiveTransparency	19
INIQuery	19

LeftAltKey	19
LinuxSelection	19
MultiLineTabs	19
RightAltKey	20
ScreenColumns	20
ScreenRows	20
ScrollWrap	20
SingleInstance	20
StatusBarOn	20
StatusBarText	20
StdColors	21
Tab1-9	21
TabIcons	21
TabSize	21
ToolBarOn	21
ToolBarText	21
Transparency	22
Tray	22
WindowHeight	22
WindowState	22
WindowX	22
WindowY	22
WindowWidth	23
Wow64FsRedirection	23
3 Configuration Dialog	23
Window Options Tab	23
Tabs Options Tab	24
Colors Options Tab	25
Registration Tab	25
Part V Help File	25
Part VI Troubleshooting and Support	26
1 Technical Support	26
2 Contacting JP Software	28
Part VII Registration	28
Part VIII Order Form	29
Part IX Copyright & Version	31
Index	32

ACKNOWLEDGEMENTS

We couldn't produce products like TCI without the dedication and quality work of many people. We can't list all of our beta testers here! A special thanks to all of you who helped make TCI elegant, reliable, and friendly.

Copyright © 2006, JP Software Inc., All Rights Reserved. TCI is a trademark and JP Software, jpsoft.com, and all JP Software designs and logos are trademarks of JP Software Inc. Other product and company names are trademarks of their respective owners.

1 Overview of TCI



Tabbed Console Interface 1.01

Welcome to our help! We have designed this material to accompany our Windows product **Tabbed Console Interface (TCI)**. **TCI** is designed for Windows XP, Windows 2003, and later versions of Windows.

TCI is a unique graphical application that allows you to run multiple console applications (generally command processors, such as **4NT**, **CMD**, **bash**, **Windows Power Shell**, etc.) within a single tabbed window.

- [TCI Interface](#) ⁵
- [Configuration Options](#) ¹⁵
- [Troubleshooting and Support](#) ²⁶
- [Order Form](#) ²⁹
- [Copyright and Version](#) ³¹

JP Software Inc.
P.O. Box 328, Chestertown, MD 21620, USA
phone: (410) 810-8818
fax: (410) 810-0026
email: sales@jpsoft.com
web: <http://jpsoft.com/>

2 Starting TCI

You will typically start **TCI** from a Windows shortcut, located:

- on the desktop, or
- in the Quick Launch bar, or
- in the **Programs** section of the **Start** menu (including its **startup** subdirectory).

You may also start it from the **Start**→**Run** dialog.

The installation software will optionally create both a **TCI** folder or group (in the **Programs** section of the **Start** menu) and a desktop object (shortcut) which starts **TCI**. Usually these are sufficient, but if you prefer, you can create multiple desktop objects or items to start **TCI** with different configurations. See [Desktop Integration](#) ⁴ for details.

Each item or icon represents a different **TCI** window. You can set any necessary command line parameters for **TCI** such as the name and path for the [.INI file](#) ¹⁶.

When you configure a **TCI** shortcut, place the full path and name for the file in the Command Line field, and put any startup options that you want passed to **TCI** after the file name. For example:

```
Command Line:      C:\Program Files\JPSoft\TCI\TCI.EXE
Working directory: C:\
```

You do not need to use the Change Icon button, because **TCI.EXE** already contains an icon.

Each Windows program has a command line which can be used to pass information to the program when it starts. The command line is entered in the Command Line field for each shortcut or each item in a Program Manager group (or each item defined under another Windows shell), and consists of the name of the program to execute, followed by any startup options.

The **TCI** startup command line does not need to contain any information. When invoked with an empty command line, **TCI** will configure itself from the [.INI file](#)^[16], open a command processor window (from %COMSPEC%), and wait for you to type a command.

2.1 Startup Command

The **TCI** command line will typically include the program name with drive and path, followed by any options for the **TCI**. For example:

```
c:\TCI\TCI.exe
```

Although the startup command line is usually very simple, you can add several options. The complete syntax for the **TCI** startup command line is (all on one line):

```
d:\path\TCI.EXE [[/]@d:\path\inifile] [//directive=value...] [/A"title"]
[/D d:\path] [/R [d:\path\]program] [/S:rows:columns] [/T:xx]
```

(Do not include the square brackets shown in the command line above. They are there to indicate that the items within the brackets are optional.)

If you include any of the options below, you should use them in the order that they are described. If you do not do so, you may find that they do not operate properly.

The command line must start with the path and name of **TCI**:

```
[c:\] d:\path\TCI.EXE
```

The additional items below may be included on the command line:

```
@d:\path\inifile OR
/@@d:\path\inifile
```

This option sets the path and name of the [.INI file](#)^[16]. You don't need this option if

- 1) your [.INI file](#)^[16] is named **TCI.INI** and
- 2) it is in one of the following directories:
 - 2.1) the same directory as **TCI.EXE**
 - 2.2) the **WINDOWS** directory

This option is most useful if you want to start **TCI** with a specific [.INI file](#)^[16].

To start **TCI** without any [.INI file](#)^[16], although you have an [.INI file](#)^[16] that would be used by default,

you can specify a file that does not exist, however, you will see an error message. Alternately, you can create an empty file and specify it as your [.INI file](#)^[16].

To get around a Windows limitation that causes the displayed command line of a shortcut to be truncated when a parameter begins with @, you can use the alternative syntax

```
/@d:\path\inifile
```

TCI will skip the leading forward slash.

Options:

//directive=value This option tells **TCI** to treat the text appearing between the // and the next space or tab as a directive. The directive should be in the same format as a line in the [.INI file](#)^[16], but may not contain spaces, tabs, or comments. This option may be repeated. It is a convenient way to place a few simple directives on the startup line without having to modify or create a new [.INI file](#)^[16].

/A This option allows you to start **TCI** with the specified window attached. If the window title specified matches more than one window, all matching windows will be attached. If **TCI** is already running, /A will attach the specified window to the existing **TCI** session.

/D Start **TCI** in the specified directory.

/R You can specify the program to start in the first tab with the /R option:

```
d:\path\TCI.exe /r d:\path\program
```

If there is already a **TCI** session running, /R creates a new tab in the existing **TCI** rather than starting a new session. If you do not specify an argument for /R, **TCI** will switch to the current tab in an existing **TCI** session, or start **TCI** with the default tab if no **TCI** session is running.

/S:rows,columns Set the startup window size, in rows and columns.

/T:xx You can also specify the default colors to use for the tabs with the /T option. (This option is for compatibility with CMD and 4NT; you'll probably find it easier to use the tabbed configuration dialog to set colors.)

```
d:\path\TCI.exe /T:xx
```

Where "xx" are the foreground and background colors, in hexadecimal.

2.2 Desktop Integration

This section outlines how to integrate **TCI** into the Windows desktop for easier access to **TCI** features. Use these instructions if you are running a fairly standard Windows configuration. If you have altered your Windows desktop properties substantially, you may need to take those changes into account.

Creating Explorer Shortcuts to TCI

The **TCI** installation program normally creates a program group which appears on the **Start Menu** under **Programs**, and includes items which start **TCI** or its online help. If you want to create

additional shortcuts elsewhere on the **Start menu**, or modify the **Programs** entries, click the right mouse button (right click) in an open area of the Task Bar, and select **Properties** on the popup menu. Select the **Advanced** tab, then the **Start Menu Programs** tab to modify or adjust the menus as required, as you would for any other Start Menu entry.

You can also create one or more shortcuts on the desktop to run **TCI**. To do so right click in any open area of the desktop. On the popup menu click **New**, then **Shortcut**. Fill in the drive and path for `d:\path\TCI.EXE` (use the appropriate drive and path for your system). Add any other command line options you wish to set to the end of the line.

No additional settings are necessary. The only required item is the drive and path for TCI.EXE. However, you can put command line switches or a command at the end of the command line for any shortcut. This allows you to run specific commands or set configuration options when you start **TCI** from that shortcut. See [Command Line Options](#)^[3] for details.

Shortcuts on the desktop can be activated by "double clicking" your pointer device, or (when highlighted) by the **Enter** key on the keyboard. You may also modify the "Properties" of a desktop shortcut by specifying a "shortcut key", which will activate it from your keyboard. **Warning:** if you rename (or move to another directory) a shortcut (link) file which had a shortcut key assigned, that assignment continues to point to the original file, which no longer exists.

Creating Explorer Context Menu Entries

Windows Explorer offers the ability to define new entries that will appear in the right click menu for various desktop objects such as files, directories and drives. Double-clicking on an icon triggers the default action (typically the **open** action) for the file type represented by that icon, but you can create additional entries and/or change the default to a different existing entry.

While the FTYPE command can be used to change the command associated with the default action, more extensive changes will require the **File Types** Explorer dialog (under the **Tools/Folder Options** menu) or direct modification of the Windows Registry. Select the method with which you are most comfortable.

Many users find it convenient to add a **TCI Prompt Here** option for directories (folders). Some Windows configurations already include a **DOS Prompt Here** which is typically hard-coded to point to **COMMAND.COM** or **CMD.EXE** but can be readily adjusted to point to the program of your choice.

As usual when dealing with the Registry, use caution and make sure you have a backup!

3 TCI Interface

[Creating and changing tabs](#)^[6]

The TCI Window

- ▶ [The TCI Window](#)^[6]
- ▶ [Menus](#)^[7]
- ▶ [Dialogs](#)^[10]
- ▶ [Tool Bar](#)^[12]
- ▶ [Status Bar](#)^[12]
- ▶ [Scrollbar Buffer](#)^[13]
- ▶ [Highlighting and Copying Text](#)^[13]
- ▶ [Resizing the TCI Window](#)^[14]

TCI and the Windows Environment

- ▶ [Using Drag and Drop](#) ¹⁴
- ▶ [Keys and Key Codes](#) ¹⁴

3.1 Creating and changing tabs

When **TCI** starts, it creates a tab running the program specified in the COMSPEC environment variable.

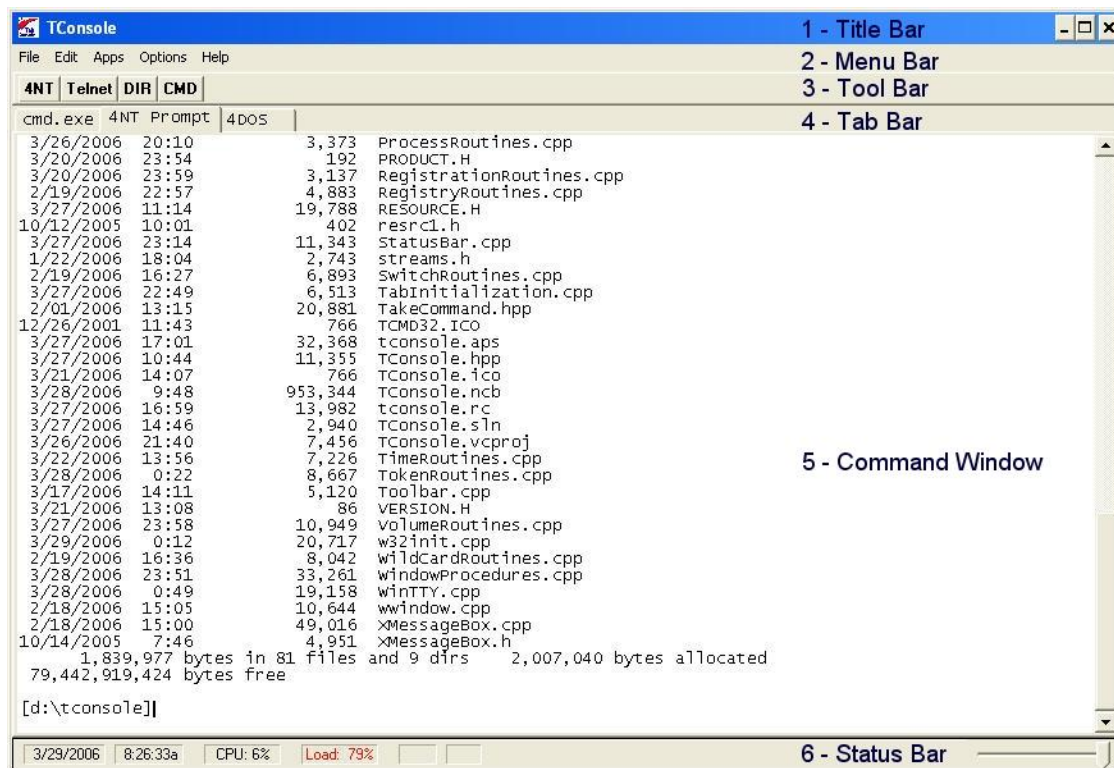
You can create a new tab by double-clicking on any blank space on the tab bar, or with the "Apps / Run" menu selection. You can switch between tabs either by left-clicking on the tab label, with the Alt-Left and Alt-Right keys, or with the "Tabs" menu selection.

If you want to reorder tabs, you can use the Ctrl-Alt-Right and Ctrl-Alt-Left keys to move the current tab.

You can also move a console window to a **TCI** tab with the "File / Attach Tab" menu selection. You can move a **TCI** tab back to the desktop with the "File / Detach Tab" menu selection.

3.2 The TCI Window

The **TCI** window has six parts:



1. The **Title Bar** is the same as the one used in most Windows applications, with a control menu button on the left and the minimize, maximize, and close buttons on the right. You can adjust the size of the **TCI** window using standard window techniques, but see [Resizing the TCI](#)

[Window](#)^[14] for information about how **TCI**'s display changes when you do so.

2. See [TCI Menus](#)^[7] for details about the **Menu Bar** and all of its menus.
3. The **Tool Bar** is used to execute internal or external commands, aliases, batch files, and applications with the click of a mouse. You can define up to 32 Tool Bar buttons; see [Tool Bar Dialog](#)^[11] for instructions. You can show or hide the Tool Bar with a choice on the [Options Menu](#)^[9], from [Window Option Tab](#)^[23] of the [Configuration Dialog](#)^[23], or with the [ToolBarOn](#)^[21] directive in [TCI.INI](#)^[16].
4. The **Tab Bar** switches between your console sessions. You can create a new tab by clicking on a blank part of the tab bar.
5. The **Command Window** accepts your input and displays the console application's output. You can use the scroll bars to view text that has scrolled out of the window. You can also save the contents of the window and scrollback buffer to a file, print all or part of the scrollback buffer, copy text from the window to the clipboard, and copy text from the clipboard or from the window to the command line. See [Highlighting and Copying Text](#)^[13] for information about saving and retrieving text in the Command Window.
6. Finally, the **Status Bar** at the bottom of the **TCI** window displays information about your system:
 - ▶ The date and time, based on the Windows clock.
 - ▶ The percentage of CPU usage.
 - ▶ The percentage "memory load" as reported by Windows.
 - ▶ The state of the Caps Lock key on the keyboard.
 - ▶ The state of the Num Lock key on the keyboard.
 - ▶ The window size (columns and rows)
 - ▶ A slider control to adjust the transparency level of the **TCI** window.

You can show or hide the Status Bar with a choice on the [Options Menu](#)^[9], with the [Window Option Tab](#)^[23] of the [Configuration Dialog](#)^[23], or with the [StatusBarOn](#)^[20] directive in [TCI.INI](#)^[16].

If you find the default "I-Beam" cursor in the **TCI** window difficult to see, disable it from the **Startup** page of the configuration dialog, or set the [IBeamCursor](#)^[18]=No directive in the [TCI] section of [TCI.INI](#)^[16] to force the use of an arrow cursor in all parts of the window.

3.2.1 TCI Menus

Like most Windows applications, **TCI** displays a menu bar along the top of the **TCI** window. To select a particular menu item, click once on the menu heading. (You cannot use the F10 key because TCI passes that key on to the console apps.)

The items on the menu bar allow you to select a variety of **TCI** features:

[File Menu](#)^[8]
[Edit Menu](#)^[8]
[Tabs Menu](#)^[9]
[Apps Menu](#)^[9]
[Options Menu](#)^[9]
[Help Menu](#)^[10]

3.2.1.1 File Menu

The File menu allows you to save or print the screen buffer, attach, detach, close, or rename tabs, or exit *TCI*.

Save to File...

Saves the contents of the *TCI* scrollbar buffer to a file. A Save As dialog box appears in which you can enter the name of the file that you wish to use.

Print...

Sends the contents of the *TCI* scrollbar buffer to the printer. A Print dialog box appears in which you can choose the portion of the Screen Buffer you wish to print.

Setup Printer...

Displays a standard printer setup dialog box. The options available in the dialog box depend on the printer driver(s) you are using.

Refresh

Redraws everything in the *TCI* window (use this selection if the display appears incorrect, for example if it is not repainted properly after another application exits).

Attach Tab

Displays a popup menu of all of the console sessions that are **not** already displayed in *TCI*, and allows you to select one to convert to a *TCI* tab.

Close Tab

Closes the current console session.

Detach Tab

Disconnects the current console session from *TCI*.

Rename Tab

Rename the current tab text (and the console title).

Exit

Ends the current *TCI* process.

3.2.1.2 Edit Menu

The Edit menu allows you to copy text between the *TCI* window and the Windows clipboard, to enable or disable the console mouse, and to search the screen buffer.

To use the Cut, Copy, or Delete commands, you must first select a block of text with the mouse, the keyboard, or with the Select All command, below. If you hold down the right mouse button while you select a block of text, that block will be copied to the clipboard automatically when you release the button.

TCI allows you to select text in either line or block mode. For more information on copying text see [Highlighting and Copying Text](#)^[13].

Copy

Copies selected text from the *TCI* scrollbar buffer to the clipboard.

Paste

Copies text from the clipboard to the active console session in *TCI*. If the text you insert contains

a line feed or carriage return, the command line will be executed just as if you had pressed Enter.

Copy + Paste

Copies the selected text from the **TCI** scrollback buffer to the active console session.

Copy + Paste + Run

Copies the selected text from the **TCI** scrollback buffer to the active console session and appends a CR/LF.

Paste + Run

Copies text from the clipboard to the active console session and executes the resulting command line.

Select All

Marks the entire contents of the **TCI** scrollback buffer as selected text.

Console Mouse

If checked, **TCI** will send mouse messages (move, left click, right click, and double click) to the console app.

Find

Perform a regular expression search of the **TCI** scrollback buffer. The **Down** button searches forwards from the current selection (or from the beginning of the screen buffer if there is no selection); the **Up** button searches backwards from the current selection (or the current cursor location if there is no selection).

3.2.1.3 Tabs Menu

The **Tabs** menu displays the titles of all of the active tabs and allows you to select a specific tab. The name of the current tab will be displayed with a check.

3.2.1.4 Apps Menu**New Tab**

Creates a new tab and starts a new console session by running the default character-mode command processor.

Run

Displays the [run dialog box](#)^[11] from which you can run an application or batch file. **TCI** remembers the commands you have run from this dialog in the current session. To select from this list click on the drop-down arrow to the right of the "Command Line" field, or press the down-arrow.

3.2.1.5 Options Menu**Configure TCI**

Opens a [dialog](#)^[23] to change the **TCI** configuration.

Configure Tool Bar

Opens a dialog where you can define up to 32 buttons for the **TCI** [tool bar](#)^[12].

Show Tool Bar

Enables or disables the **TCI** [tool bar](#)^[12], which appears near the top of the **TCI** window. The tool bar will not appear until you have defined at least one item with the Configure Tool Bar command,

above.

Show Status Bar

Select this item to enable or disable the **TCI status bar**^[12], which appears at the bottom of the **TCI** window.

Show Console Window

Select this item to show the (normally hidden) console window for this tab. (This option is normally only used for debugging purposes, if the console window output differs from the **TCI** window output.)

3.2.1.6 Help Menu

See also: the [Help File](#)^[25] topic.

Contents

Displays the **Table of Contents** of the **TCI** help file (*TCI.chm*) from which you can directly navigate to any topic. This is the same display you will see if you select the **Contents** tab from within the help system.

Search Topics

Displays the **Search dialog** of the **TCI** help file (*TCI.chm*) from which you can search for any topic. This is the same dialog you will see if you select the **Search** tab from within the help system.

Index

Displays the **Index dialog** of the **TCI** help file (*TCI.chm*) from which you can search for any keyword. This is the same dialog you will see if you select the **Index** tab from within the help system.

<http://jpsoft.com/>

A hyperlink to our web site. (Depending on your configuration, you may need to first establish an Internet connection.)

Order from JP Software

A hyperlink to our Secure Online Store. (Depending on your configuration, you may need to first establish an Internet connection.)

About

Displays the **TCI** version, copyright, and license information.

3.2.2 TCI Dialogs

The **TCI** menus lead to several dialog boxes. Each is listed here for quick reference, though in general you will find it easier to learn about each one from the context in which it is used (for example, the information referenced below on the tool bar dialog will be more useful after you have read the section on the [tool bar](#)^[12]).

TCI uses standard Windows dialogs for tasks like printing, selecting a font, or browsing files and directories. These dialogs are provided by Windows, not **TCI**, and are common to most Windows programs; they are not documented within this help system.

The reference in parentheses after certain dialogs listed below shows the name of the [menu](#)^[7] you

can use to access that dialog.

[Run Program Dialog](#)^[11] ([Apps](#)^[9])
[Properties Dialog](#)^[23] ([Options](#)^[9])
[Tool Bar Dialog](#)^[11] ([Options](#)^[9])
[Windows Tab](#)^[23]
[Registration Tab](#)^[25] ([Options](#)^[9])

3.2.2.1 Run Program Dialog

The Run Program dialog (called from the [Apps menu](#))^[9] allows you to run a program by typing its name or browsing the disk.

In the Command Line edit box, you can enter the name of any executable program plus command line parameters. If you click on the arrow to the right of the edit box, the dialog displays a list of previous commands you have entered during the current **TCI** session.

The **Tab**, **Normal**, **Minimized**, and **Maximized** radio buttons determine the type of window that will be used for the program. **Tab** will start the program as a new tab in **TCI**. If you select **Minimized**, the program will start as an icon on the Taskbar. **Maximized** starts the program in a full-screen window. The **Normal** button lets the operating system select the size and position of the program's window.

The **Browse** button leads to a standard file browser from which you can select any executable program. Your choice will be placed in the Command Line edit box, and you can add parameters before selecting OK to run the program.

3.2.2.2 Tool Bar Dialog

This dialog (called from the **TCI** [Options menu](#))^[9] allows you to define or modify buttons on the [tool bar](#)^[12].

The **Font Size** setting applies to the display text for all buttons on the **TCI** tool bar.

Select the button you want to define, modify, or delete by clicking on it. A second dialog opens to let you define the label, command, directory, and mode for the button.

In the **Label** field, enter the text that you want to display on the button when it appears in **TCI**'s tool bar.

In the **Command** field, you can enter either the command to be started in a new tab ("Start new tab"), or the keystrokes to be sent to the current tab ("Send to current tab"). In the **Command** field, enter the command to be executed when you select the button on the tool bar. You can use the **Browse** button to find a path and filename to be entered at the beginning of the Command field.

If the tab is sending keystrokes to the current tab, the text is in the same format as the KEYSTACK command in 4NT and Take Command:

Keystroke Interpretation

An exclamation mark ! will clear all pending keystrokes.

Characters entered within double quotes, e.g., "**abc**" will be sent to the active console application as is. The only items allowed outside the quotes are key names, the ! and **/W** options, and a

repeat count.

If *keyname* is a single letter, it is sent to the console application as if it had been quoted, without any spaces. For example, you could enter the string *abc* as *a b c*, instead of the quoted string method described above.

If *keyname* is a number, it is interpreted as a *scan code*. See [Key Names](#)^[14] for the codes you need.

Repetition. To send *keyname* several times, follow it with a space, left bracket [, the repetition count, and a right bracket]. For example, the command below will send the **Enter** key 4 times:

```
enter [4]
```

The repeat count works only with an individual *keyname*. It cannot be used with quoted strings. You must have a blank space between the *keyname* and the repetition count.

If you exit by choosing the **OK** button, any changes you have made will be saved in [TCI.INI](#)^[16], and reloaded automatically the next time you start *TCI*. If you use the **Cancel** button, your changes will be discarded.

If you want to rearrange the order of the buttons on the tool bar, use a text editor (e.g. Windows' Notepad) to edit the [Buttons] section of [TCI.INI](#)^[16]. Simply rearrange the lines into the order you wish, and renumber the buttons accordingly.

3.2.3 Tool Bar

The *TCI* window has an optional Tool Bar that you can use to execute internal or external commands, aliases, or batch files with the click of a mouse.

To create buttons for the Tool Bar, select Configure Tool Bar from the [Options](#)^[9] menu. This selection displays the [tool bar dialog](#)^[11].

You can define up to 32 Tool Bar buttons.

To enable or disable the Tool Bar, use the [ToolBarOn](#)^[21] directive in [TCI.INI](#)^[16], the Tool Bar Enable setting on the [Windows tab](#)^[23] in the [configuration dialogs](#)^[23], or the Show Tool Bar command in the [Options menu](#)^[9].

The configuration dialog and [TCI.INI](#)^[16] settings are modified when you enable and disable the tool bar from the Options menu. This preserves the tool bar state when you close *TCI* and restores it the next time you start a *TCI* session.

3.2.4 Status Bar

The *TCI* window has an optional Status Bar that shows information about your system. To enable or disable the Status Bar, use the [StatusBarOn](#)^[20] directive in the [TCI.INI](#)^[16] file, the Status Bar Enable setting on the [Windows tab](#)^[23] in the [configuration dialogs](#)^[23], or the **Show Statusbar** command in the [Options menu](#)^[9].

The configuration dialog and [TCI.INI](#)^[16] settings are modified when you enable and disable the status bar from the Options menu. This preserves the status bar state when you close *TCI*, and restores it the next time you start a *TCI* session.

The status bar displays the following information:

- ▶ The date and time.
- ▶ The CPU usage percentage as reported by Windows.
- ▶ The percentage "memory load" as reported by Windows.
- ▶ The state of the Caps Lock key on the keyboard.
- ▶ The state of the Num Lock key on the keyboard.
- ▶ The number of columns and rows in the window.

The status bar also includes a slider control on the right side which controls the transparency level of the **TCI** window.

3.2.5 Using the Scrollback Buffer

TCI retains the text displayed on its screen in a "scrollback buffer". You can scroll through this buffer using the mouse and the vertical scroll bar at the right side of the **TCI** window, just as you can in any Windows application. You can also scroll forward and back with the Alt-Up, Alt-Down, Alt-PgUp, and Alt-PgDn keys.

If you scroll back through the buffer to view previous output and then press any keys (other than the scroll keys above), **TCI** will automatically return to the current cursor position in the scrollback buffer.

3.2.6 Highlighting & Copying Text

While you are working at the **TCI** prompt you can use the Windows clipboard to copy text between **TCI** tabs and other applications. You can also select all of the text in the current **TCI** tab by using the **Select All** command on the Edit menu.

The right mouse button will pop up an **Edit** context menu.

To copy text from the **TCI** window to the clipboard, first use the mouse to highlight the text, then use the **Copy** command in the [Edit menu](#)^[8]. You can optionally combine multiple selected lines into a single line before placing it in the keyboard by holding down the **Ctrl** key and selecting **Copy** (or **Copy+Paste** or **Copy+Paste+Run**) from the right-click context menu.

You can alternately copy in block mode by holding down the **Alt** key when you left-click to start the highlight.

To copy text from the clipboard use the middle mouse button or the Paste command in the Edit menu.

To paste text from elsewhere in the **TCI** window, highlight the text with the mouse and use the **Copy+Paste** command in the Edit menu. It's a convenient way to copy a filename from a previous command directly to the command line.

You can also use Windows' [Drag and Drop](#)^[14] facility to paste a filename from another application.

3.2.7 Resizing the TCI Window

You can resize the **TCI** window at any time by dragging a corner with the mouse. Resizing the window changes the number of rows and columns of text which will fit in the command window (the actual number of rows and columns for any given window size depends on the font you are using).

It is possible to create a **TCI** window that is larger than the largest allowable console window if the **TCI** font is smaller than the default console font. If this occurs, **TCI** will resize itself automatically to the largest allowable size.

3.3 Using Drag & Drop

TCI is compatible with Windows' **Drag-and-Drop** facility.

To add a filename to the command line using drag and drop simply drag the file from another application using the mouse, and release the mouse button with the file icon anywhere inside the **TCI** window. The full name of the file will be pasted onto the command line at the current cursor position.

TCI is a drag and drop "client", which means it can accept files dragged in from other applications and paste their names into the current active session as described above. It is not a drag and drop "server", so you cannot drag filenames from the **TCI** window into other applications. However you can copy filenames and other text from the **TCI** Window to other applications using the clipboard. (See [Highlighting and Copying Text](#)^[13] for details.)

3.4 Keys and Key Codes

Key names are used by **TCI** for the toolbar commands. The format of a key name is:

[Prefix-]Keyname

The valid prefix and keyname combinations are shown in the table below. Names of keys must be spelled exactly as shown, except for case. Note that you cannot specify a punctuation key.

Prefix	Valid for key names
none	A-Z, 0-9, F1-F12, Tab, Bksp, Enter, Up, Down, Left, Right, PgUp, PgDn, Home, End, Ins, Del, Esc
Alt-	A-Z, 0-9, F1-F12, Bksp
Ctrl-	A-Z, F1-F12, Tab, Bksp, Enter, Up, Down, Left, Right, PgUp, PgDn, Home, End, Ins, Del
Shift-	F1-F12, Tab

The prefix and key name must be separated by a hyphen (-). For example:

Alt-F10 ctrl-bksp

Some keys are intercepted by Windows and are not passed on to **TCI**. For example, **Alt-Tab**, **Alt-Esc** and **Ctrl-Esc** typically pop up a tasklist, or are used in switching among multiple tasks. **Alt-space** pops up the **TCI** system menu.

The above comments are based on common US-style keyboards. Some key combinations might not be available on some keyboards.

4 Configuration Options

TCI has a number of configuration options, allowing you to customize its operation for your needs and preferences. Most of these options can be set through the use of [directives](#)^[16] stored in the [Initialization File](#)^[16]. The Options / Configure menu command invokes the [Configuration Dialog](#)^[23], which is able to set the majority of [directives](#)^[16], or to dynamically modify the value of a single directive at a time.

4.1 Initialization (.INI) Files

Most of the **TCI** configuration is controlled through initialization directives saved in the **TCI.INI** file.

Note: The **TCI.INI** file is also used by **TCI** to store some operating characteristics, such as the default size and location of the **TCI** window.

Modifying the TCI.INI File

You can create, add to, and modify the **.INI** file in two ways:

- with the [configuration dialog](#)^[23], available via the **Configure TCI** selection on the [Options menu](#)^[9], or
- by editing the file with any text editor.

Most of the changes you make in the [configuration dialog](#)^[23] take effect immediately. A few (*e.g.*, those associated with the startup screen size) only take effect when you start a new **TCI** session. See the online help for each individual dialog page if you are not sure when a change will take effect.

TCI reads its **TCI.INI** file (see [Locating the .INI file](#)^[15]) when it starts, and configures itself accordingly. The **TCI.INI** file is not reread when you change it manually. For manual changes to take effect, you must restart **TCI**. If you edit **TCI.INI** manually, make sure you save the file in ASCII format.

Each item that you can include in **TCI.INI** has a default value. You only need to include entries in the file for settings that you want to change from their default values.

Using the TCI.INI File

Some settings in **TCI.INI** are initialized when you install **TCI**. Other (such as window size and position) are modified as you use **TCI**, so you will probably have an **TCI.INI** file even if you didn't create one yourself. You should not delete this file.

Locating the TCI.INI File

TCI searches for **TCI.INI** in three places:

- ▶ If there is an `@d:\path\inifile` option on the startup command line, **TCI** will use the path and file name specified there, and will not look elsewhere. If no such file exists, no **TCI.INI** file will be processed.
- ▶ If there is no **TCI.INI** file name on the startup command line, the search starts in the directory where the **TCI** program file is stored. This is the default location for **TCI.INI**. **TCI** determines this directory automatically.

If no *TCI.INI* file is found, all directives are set to their default values. If the operations performed in *TCI* window require it, a new *TCI.INI* will be created, using the default location and name.

See [Command Line Options](#)^[3] for more details about the startup command line.

4.2 Directives

Syntax

Most lines in [TCI.INI](#)^[15] consist of a one-word **directive**, an equal sign =, and a **value**. For example, in the following line, the word **Transparency** is the directive and **255** is the value:

```
Transparency = 255
```

Any spaces before or after the equal sign are ignored.

Regardless of how long a string value is, you must enter it all on one line. Strings cannot be continued to a second line.

Each line must be less than 2,047 characters.

The format of the **value** part of a directive line depends on the individual directive. It may be a numeric value, a single character, a choice (like **Yes** or **No**), a color setting, a filename, or a text string. The value begins with the first non-blank character after the equal sign and ends at the end of the line or the beginning of a comment.

Blank lines are ignored in *TCI.INI* and can be used to separate groups of directives.

You can place comments in the file by beginning a line with a semicolon ;. You can also place comments at the end of any line except one containing a text string value. To do so, enter at least one space or tab after the value, a semicolon, and your comment, like this:

```
Transparency = 250 ;set window transparency to not quite opaque
```

If you try to place a comment at the end of a string value, the comment will become part of the string and will probably cause an error.

If you use the [configuration dialogs](#)^[23] to modify *TCI.INI*, comments on lines modified from within the dialogs will not be preserved when the new lines are saved. To be sure *TCI.INI* comments are preserved, put them on separate lines.

When *TCI* detects an error while processing *TCI.INI*, it displays an error message and prompts you before processing the remainder of the file. This allows you to note any errors before the startup process continues. The directive in error will retain its previous or default value.

If you need to test different values for a *TCI.INI* directive without repeatedly editing the file, see the [INIQuery](#)^[19] directive.

Types of Directives

There are various types of directives in *TCI.INI*. The type of a directive is shown under the individual help topic for that directive. The types are distinguished by the kind of data, if any, that must be entered after the = (equal sign):

- › **Name = nnnn (1234):** This directive takes a numeric value which replaces the "nnnn." The default value is shown in parentheses or listed below the directive's description.
- › **Name = CHOICE1 | Choice2 | ... :** This directive must be set to one of the vertical bar separated values listed between the braces. The default value is shown in all upper case letters in the directive description, but in your file any one of the choices can be entered, using any case. (Do not enter the vertical bar.) For example, if the choices were shown as **YES | No** then **YES** is the default.
- › **Name = Path:** This directive takes a path specification, without a filename. The value should include both a drive and path (e.g., *C: \TCI*) to avoid any possible ambiguities. A trailing backslash \ at the end of the path name is accepted but not required. Any default path is described in the text.
- › **Name = File:** This directive takes a filename. We recommend that you use a full filename including the drive letter and path to avoid any possible ambiguities. Any default filename is described in the text.

Evaluation of Directives

The directives are evaluated sequentially from top to bottom. When a directive is processed more than once during startup, the value replaces any previous one(s).

4.2.1 Directives by Name

COMSPEC 18 ↗	Set default command processor
ConsoleAltKey 18 ↗	Send Alt key messages to console
ConsoleBufferRows 18 ↗	Set console screen buffer size
ConsoleMouse 18 ↗	Send mouse messages to console
IBeamCursor 18 ↗	Set text cursor style
InactiveTransparency 19 ↗	Default transparency for inactive TCI window
INIQuery 19 ↗	Query for each line in the .INI file
LinuxSelection 19 ↗	Set option to automatically copy to clipboard upon selection
MultiLineTabs 19 ↗	Set single line or multiple lines for the tab labels
ScreenColumns 20 ↗	Set screen columns at startup
ScreenRows 20 ↗	Set screen rows at startup
ScrollWrap 20 ↗	Set tab scroll key wrap mode
StatusBarOn 20 ↗	Set status bar mode at startup
StatusBarText 20 ↗	Point size of status bar text
StdColors 21 ↗	Default window colors
TabIcons 21 ↗	Set icon display in the tab label
TabSize 21 ↗	Set the maximum tab text length
ToolBarOn 21 ↗	Set tool bar mode at startup
ToolBarText 21 ↗	Point size of tool bar text
Transparency 22 ↗	Default transparency for TCI window
Tray 22 ↗	Minimize TCI to the system tray instead of the taskbar

WindowHeight 22	Initial height of the TCI window
WindowState 22	Initial state for the TCI window
WindowWidth 23	Initial width of the TCI window
WindowX 22	Initial position of the left border of the TCI window
WindowY 22	Initial position of the top border of the TCI window
Wow64FsRedirection 23	Set debugging options

4.2.2 COMSPEC

COMSPEC=pathname

Overrides the default COMSPEC environment setting. For example, if your default COMSPEC is **c:\windows\system32\cmd.exe**, you can have **TCI** start **4NT** as the default shell for new tabs by setting :

```
comspec=c:\program files\jpssoft\4nt8\4nt.exe
```

in your *TCI.INI* file.

4.2.3 ConsoleAltKey

ConsoleAltKey=NO | yes

Enables or disables the Alt key for console sessions. You can also set **ConsoleAltKey** in each tab with the "Edit/Console Alt Key" menu entry.

4.2.4 ConsoleBufferRows

ConsoleBufferRows=nnn

Sets the number of rows in the console screen buffer. The range is 100 to 20,000.

4.2.5 ConsoleMouse

ConsoleMouse=NO | yes

Enables or disables the mouse cursor for the console sessions. You can also set it in each tab with the "Edit/Console Mouse" menu entry.

4.2.6 IBeamCursor

IBeamCursor = YES | no

If set to **Yes**, **TCI** will display the standard "I-Beam" cursor in text areas of its window. If **IBeamCursor** is set to **No**, the "Arrow" cursor is used in all areas of the window. This can be helpful on laptop systems where the I-Beam cursor is hard to see.

The cursors are those defined in your Windows configuration (generally under the "Pointers" tab of the "Mouse Properties" dialog).

IBeamCursor=YES uses the cursor referred to as "I-Beam" or "Text Select", and **IBeamCursor=No** uses the cursor referred to as "Arrow" or "Normal Select".

4.2.7 InactiveTransparency

InactiveTransparency = nn

Default: 255

Set the default transparency level for an inactive (not in focus) **TCI** window. The range is 0 (invisible) to 255 (opaque).

4.2.8 INIQuery

INIQuery = yes | NO

If set to **Yes**, a prompt will be displayed before execution of each subsequent line in [TCI.INI](#)^[15]. This allows you to modify certain directives when you start **TCI** in order to test different configurations. INIQuery can be reset to **No** at any point in the file. Normally INIQuery = Yes is only used during testing of other **TCI.INI** file directives.

The dialog displayed by **TCI** when INIQuery = Yes gives you three options:

- Yes** Executes the directive
- No** Skips the directive
- Cancel** Executes the directive and all remaining directives in the [TCI] section of the **TCI.INI** file (i.e., cancels the INIQuery = Yes setting)

4.2.9 LeftAltKey

LeftAltKey=YES | no

If set to YES, then the left Alt key + the cursor keys will be intercepted by TCI, and will switch tabs or scroll the window.

If neither LeftAltKey nor RightAltKey are set, then all Alt-cursor keys will be passed to the console application.

See also [RightAltKey](#)^[20].

4.2.10 LinuxSelection

LinuxSelection=NO | yes

If set to YES, when selecting text **TCI** will copy the text automatically to the clipboard when the left mouse button is released.

4.2.11 MultiLineTabs

MultiLineTabs=NO | yes

If set to YES, multiple rows of tabs are displayed (if necessary), so all tabs are visible at once. If set to NO, when the number of tabs exceeds the space on the line, the tab bar will show scroll buttons so tabs can be scrolled left & right.

4.2.12 RightAltKey

RightAltKey=YES | no

If set to YES, then the right Alt key + the cursor keys will be intercepted by TCI, and will switch tabs or scroll the window.

If neither LeftAltKey nor RightAltKey are set, then all Alt-cursor keys will be passed to the console application.

See also [LeftAltKey](#)^[19].

4.2.13 ScreenColumns

ScreenColumns=nnn

Set the number of screen columns at startup.

4.2.14 ScreenRows

ScreenRows=nn

Set the number of screen rows at startup.

4.2.15 ScrollWrap

ScrollWrap=NO | yes

If set to YES, the tab scrolling keys (Alt-Left and Alt-Right) will wrap around when they reach the first or last tab.

4.2.16 SingleInstance

SingleInstance=NO | yes

If set to YES, only a single instance of **TCI** will be allowed. If you try to start **TCI** when it is already loaded, the previous **TCI** instance will be brought to the foreground.

4.2.17 StatusBarOn

StatusBarOn = YES | no

Yes enables the status bar when **TCI** starts; **No** disables it. The status bar can be enabled or disabled while **TCI** is running by using the [Options menu](#)^[9]. The StatusBarOn setting is automatically updated to reflect the current state of the status bar each time **TCI** exits; this preserves the status bar state between sessions.

4.2.18 StatusBarText

StatusBarText = nnnn

Default: 8

Sets the size of the text on the status bar, in points. The range is 4 to 16.

4.2.19 StdColors

StdColors = Color

Sets the default colors to be used for console sessions.

4.2.20 Tab1-9

TAB n =pathname

Specify the program to run in tab n at startup. You can specify up to 9 tabs.

```
tab1=c:\program files\jpsoft\4nt8\4nt.exe
tab2=c:\windows\system32\cmd.exe
tab3=c:\cygwin\bin\bash.exe
```

The **Tab n** directives will be ignored if you start **TCI** with the [/R](#) option.

4.2.21 TabIcons

TabIcons=YES | no

Setting **TabIcons**=YES shows the application's icon in the tab label. (After changing **TabIcons**, you will need to restart **TCI** for the change to take effect.)

4.2.22 TabSize

TabSize=nn

TabSize sets the maximum length of text in the tab label (which is the window title of the console session). If the length of the title exceeds **TabSize**, it is truncated and a trailing "." is appended. If **TabSize** is negative, the tab label is set to the rightmost "nn" characters and a leading "." is prefixed.

The range is -128 to 128, and the default value is 20.

4.2.23 ToolBarOn

ToolBarOn = YES | no

YES enables the tool bar when **TCI** starts; **NO** disables it. The tool bar can be enabled or disabled while **TCI** is running by using the [Options menu](#). The **ToolBarOn** setting is automatically updated to reflect the current state of the tool bar each time **TCI** exits; this preserves the tool bar state between sessions.

4.2.24 ToolBarText

ToolBarText = nnnn

Default: 8

Sets the point size of text on the tool bar. The range is 4 to 16.

4.2.25 Transparency

Transparency = *nn*

Default: 255

Set the default transparency level of the **TCI** window. The range is 0 (invisible) to 255 (opaque). You can also set the transparency level with the slider control on the right side of the status bar.

You can set the transparency level of an inactive **TCI** window with the [InactiveTransparency](#)^[19] directive.

4.2.26 Tray

TRAY=NO | yes

If **TRAY** is set to YES, **TCI** will minimize itself to the system tray instead of the task bar.

4.2.27 WindowHeight

WindowHeight = *nnn*

If [WindowState](#)^[22] is set to **CUSTOM**, **WindowHeight** specifies (in pixels) the initial height of the **TCI** window.

See also: [WindowWidth](#)^[23], [WindowX](#)^[22], and [WindowY](#)^[22].

4.2.28 WindowState

WindowState = STANDARD | maximize | minimize | custom

Sets the initial state of the **TCI** window. **Standard** puts the window in the default position on the Windows desktop. **Maximize** maximizes the window; **Minimize** minimizes it, and **Custom** sets it to the position specified by the [WindowX](#)^[22], [WindowY](#)^[22], [WindowWidth](#)^[23], and [WindowHeight](#)^[22] directives.

4.2.29 WindowX

WindowX = *nnnn*

If [WindowState](#)^[22] is set to **CUSTOM**, **WindowX** specifies (in pixels) the initial position of the left border of the **TCI** window.

See also: [WindowHeight](#)^[22], [WindowWidth](#)^[23], and [WindowY](#)^[22].

4.2.30 WindowY

WindowY = *nnnn*

If [WindowState](#)^[22] is set to **CUSTOM**, **WindowY** specifies (in pixels) the initial position of the top border of the **TCI** window.

See also: [WindowHeight](#)^[22], [WindowWidth](#)^[23], [WindowX](#)^[22].

4.2.31 WindowWidth

WindowWidth = *nnnn*

If [WindowState](#)^[22] is set to **CUSTOM**, **WindowWidth** specifies (in pixels) the initial width of the **TCI** window.

See also: [WindowHeight](#)^[22], [WindowX](#)^[22], and [WindowY](#)^[22].

4.2.32 Wow64FsRedirection

Wow64FSRedirection = YES | no

If set to NO, will override the default Windows 64 behavior of remapping windows\system32 calls to windows\SysWOW64.

4.3 Configuration Dialog

This dialog (called from the [Options menu](#)^[9] in **TCI**), contains several pages of options that let you change the way **TCI** looks and works. Each option sets a corresponding directive in [TCI.INI](#)^[15].

Unless you select the **Cancel** button, any changes you make will take effect immediately. If you select **Apply**, the settings will only apply for the duration of that session. If you select **Save**, the settings will be recorded in [TCI.INI](#)^[15] and will be in effect each time you start **TCI**.

For details about *TCI.INI* and *TCI.INI* directives, the allowable ranges for each, and the effect of each, see [Initialization \(.INI\) Files](#)^[15] and [Directives](#)^[16].

While you are using the dialog, you can move between sets of configuration options by clicking on the individual tabs. The tabs are:

[Windows](#)^[23]
[Tabs](#)^[24]
[Colors](#)^[25]
[Registration](#)^[25]

4.3.1 Window Options Tab

If you are not familiar with the purpose or use of the configuration dialogs, review the main [configuration dialogs](#)^[23] topic before continuing. If you need more details about a particular option, see the Initialization directive related to that option.

In the Display section:

The **ScreenRows** and **ScreenColumns** fields set the **TCI** window size at startup. (They will be overridden by a **/S:n,n** startup option.)

The **Standard**, **Max**, **Min**, and **Custom** radio buttons select the initial state for the **TCI** window and set the [WindowState](#)^[22] directive.

The **X**, **Y**, **Width**, and **Height** fields set the initial size and position of the **TCI** window and set the [WindowX](#), [WindowY](#), [WindowWidth](#), and [WindowHeight](#)^[22] directives. They are ignored unless the **Custom** radio button is also selected.

The **Minimize to Tray** option sets the [Tray](#)^[22] directive (minimizing *TCI* to the system tray instead of the task bar).

The **Single Instance** option restricts *TCI* to a single instance. (If you try to start another copy of *TCI*, the previous instance will be brought to the foreground.)

The **Transparency** field sets the transparency level for the *TCI* window.

In the Window Configuration section:

Enable Toolbar sets the tool bar mode at startup and the [ToolBarOn](#)^[21] directive. The **Font Size** field sets the point size of tool bar text and the [ToolBarText](#)^[21] directive. The tool bar will only be visible if you have defined one or more tool bar buttons.

Enable Statusbar sets the status bar mode at startup and the [StatusBarOn](#)^[20] directive. The **Font Size** field sets the point size of status bar text and the [StatusBarText](#)^[20] directive.

In the Console section:

Console Mouse enables or disables the mouse cursor for the console sessions. You can also set it in each tab with the "Edit/Console Mouse" menu entry.

Console Alt-Key enables or disables the Alt key for console sessions. You can also set **ConsoleAltKey** in each tab with the "Edit/Console Alt Key" menu entry.

Buffer Rows sets the number of rows in the console screen buffer. The range is 100 to 20,000.

In the Cursor section:

The **Arrow** and **I-Beam** radio buttons let you select the type of cursor which will use and also set the [IBeamCursor](#)^[18] directive.

Console Font:

The **Console Font** button opens a standard Windows font dialog that lets you select the font, point size, and font style for the *TCI* display. Font information is stored in a separate section of the [TCI.INI](#)^[15] file; therefore, the font option does not have a corresponding directive.

4.3.2 Tabs Options Tab

If you are not familiar with the purpose or use of the configuration dialogs, review the main [configuration dialogs](#)^[23] topic before continuing. If you need more details about a particular option, see the Initialization directive related to that option.

Top puts the tabs on the top of the window, and **Bottom** puts them at the bottom of the window.

Multiple Tab Rows sets the [MultiLineTabs](#)^[19] directive (tabs at the top or the bottom of the display window).

Tab Icons sets the [TabIcons](#)^[21] directive (displaying the application's icon in the tab label).

Wrap Scroll Keys sets the [ScrollWrap](#)^[20] directive (the Alt-Left and Alt-Right keys wrap around after reaching the beginning or the end of the tabs).

If **LeftAltKey** is set, then only the left Alt key + the cursor keys will switch tabs or scroll the window. (The right Alt key will be passed to the console application.)

If **RightAltKey** is set, then only the right Alt key + the cursor keys will switch tabs or scroll the window. (The left Alt key will be passed to the console application.)

Tab Size sets the [TabSize](#)^[21] directive (the maximum length of the tab label text).

The **Font** button opens a standard Windows font dialog that lets you select the font, point size, and font style for the **TCI** tab labels. Font information is stored in a separate section in *TCI.INI*; therefore, the font option does not have a corresponding directive.

Default App field sets the [COMSPEC](#)^[18] directive to specify the program you want to start in new tabs. If the [COMSPEC](#)^[18] directive isn't specified, **TCI** uses the value of the COMSPEC environment variable.

The **Tab1 - Tab9** fields specify programs to run in each tab at startup.

4.3.3 Colors Options Tab

If you are not familiar with the purpose or use of the configuration dialogs, review the main [configuration dialogs](#)^[23] topic before continuing. If you need more details about a particular option, see the Initialization directive related to that option.

The options in the **Colors** section let you select foreground and background colors for text in the **TCI** window. They also set the [StdColors](#)^[21] directive.

4.3.4 Registration Tab

The Register tab allows you to register **TCI**. When you purchase a new or upgrade copy of **TCI**, you will receive an email with your name and registration key. Enter the registration information exactly as you received it in the email (preferably by cutting & pasting).

Remember to save your registration key in a safe place in case you need to reinstall. If you have lost your registration key, you can request a replacement by contacting JP Software at sales@jpssoft.com, or at one of the addresses listed at the start of this file.

5 Help File

The distribution package for **TCI** includes **TCI.chm**, a help file in Windows' compiled HTML format. **TCI** uses the default Windows help system to display the contents of **TCI.chm**. Under most configurations, Windows will remember the last used settings (window size, tab selected, etc.) for that file. Once you've started the help system, you can use standard Windows HTML Viewer keystrokes to navigate. For more information, see your Windows documentation.

If the topic you seek is not listed, look for a suitable cross reference from the **Index** tab or use the **Search** tab. The topics you use most often can be stored and recalled through the **Favorites** tab.

6 Troubleshooting and Support

If you need help with **TCI**, we encourage you to review our documentation and then contact us for assistance if required.

If you need help with sales, ordering, or shipments (including defective disks or other materials which were shipped to you), or with registration codes, please contact our Sales and Customer Service department. See [Contacting JP Software](#)^[28] for our email address, mail address, and telephone numbers. Note that Sales and Customer service staff cannot assist you with technical problems and conversely Technical Support representatives cannot answer your sales or registration questions.

If you need technical support for **TCI**, review the [Technical Support](#)^[26] information section, which tells you what we need to know to provide you with accurate and timely support, then contact us via one of the methods described there. In most instances, our Online Support Forum is the fastest and most efficient way to address your technical questions and concerns.

6.1 Technical Support

Support Plans

Standard, no-charge support is available electronically through our [Support Forum](#)^[26]. We also offer a paid support option which includes automatic upgrades and support by private email or telephone. For complete details on all support options, including plans currently offered and support terms and conditions, see our web site at <http://jpsoft.com/>.

Before you contact Technical Support, please review the [What Information do we need?](#)^[27] section which outlines the basic data we need to best address your questions and concerns.

Online Support

The primary venue for Technical Support is via our free online Support Forum, where our support personnel can read and respond to your messages, and other users can participate in and benefit from the exchange. The Forum is a lively community frequented by a number of experienced and helpful users. JP Software representatives read every Forum message and respond as promptly as reasonably possible whenever appropriate.

If you have any kind of Internet access, even if only email, chances are you can use the Forum which we make accessible as a mailing list, a news group, and web pages. Forum members must provide a valid email address and a full name to be able to post, but you do not need to join or provide any information to simply visit or search the Forum. For complete details and direct access links see the support area of our web site at <http://jpsoft.com/>.

A number of other support resources are available from our web site, including documentation files, technical tips and discussions, and other technical information. We update this information regularly, and we encourage you to check the Technical Support area of the web site to see if the information there will address any questions you have.

If you are unable to gain access to the forum, or you need to include confidential information in your support request, contact us via email at support@jpsoft.com and we will assist you in resolving the problem with forum access, or assist you with your request privately if appropriate. Please do not use that address for standard support questions which can be posted on the forum.

If you are a paid support customer you should use the online Support Forum for routine questions. To create a private support incident refer to the materials sent to you with your subscription for contact

information, or email priority_support@jpsoft.com.

What Information do we need?

Before contacting us for support, please check this help file and other documentation for answers to your question. If you can't find what you need, try the Index. If you're having trouble getting **TCI** to run properly, look through the Support Forum for any last-minute information.

If you need help with sales, ordering, shipments, registration keys, or other similar non-technical issues please contact our Sales and Customer Service department. Technical Support will not be able to assist you with those matters. Conversely, Customer Service is not equipped to answer your technical questions. See [Contacting JP Software](#)^[28] for our addresses.

Regardless of how you contact us for support, we can do a much better job of assisting you if you can give us some basic information, separate from your interpretations of or conclusions about the problem. Remember that we know NOTHING about your system or configuration unless you tell us, and we can't always make accurate guesses if you don't. The first four items listed below are essential for us to be able to understand and assist you with your problem:

- **What environment are you working in?** This includes the operating system version you are using, the version of the JP Software product involved, and related information such as network connections and the name and version number of any other software which appears to be involved in the problem. Every question posted on the Forum should include a brief identification such as "TCI 1.00 build 38 under XP+SP2" or something similar.
- **What exactly did you do?** A concise description of what steps you must take to make the problem appear is much more useful than a long analysis of what might be happening. In most cases, posting the exact command line(s) giving you trouble is the simplest approach.
- **What did you expect to happen?** Tell us the result you expected from the command or operation in question, so that we understand what you are trying to do. Something that seems "obvious" to you might not be so to others. For example, tell us "I was expecting the file name to be in upper case" or a similar brief explanation.
- **What actually happened?** At what point did the failure occur? If you saw an error message or other important or unusual information on the screen, what **exactly** did it say? Don't simply tell us "it didn't work". For example, if you were expecting output from a command and saw none, at least tell us that much.
- **Briefly, what techniques did you use to try to resolve the problem?** What results did you get? One technique that tends to solve many problems is to review the help for the command or feature in question and try it with the documented exact correct syntax, as opposed to some undocumented alternative.
- **If the problem seems related to startup and configuration issues,** what are the contents of the [TCI.INI](#)^[16] file, any batch files they call, and any alias or environment variable files they load? You do not need to include the entire file, of course, but at least any entry you think might be relevant, such as a specific INI directive or a command.
- **Can you repeat the problem or does it occur randomly?** If it's random, does it seem related to the programs you're using when the problem occurs? Random or occasional problems are very difficult to diagnose. Do your best to determine some sort of pattern or sequence of events that triggers the problem. If you can't reproduce it, chances are we won't be able to either. Note that mysterious unexplainable problems often permanently disappear

after simply reloading the program or even rebooting the system.

- If **TCI** experiences a **fatal failure**, such as a Windows General Protection Fault (GPF), Unhandled Exception, or similar unrecoverable error, it will attempt to dump the relevant memory locations and other useful data to a text file (**TCI.GPF**) into its directory if at all possible. That file is important for tracking down the exact internal location of the failure, whether in the **TCI** executable itself or in some Windows component that it happened to invoke, and Technical Support may ask you to send a copy of that text file to a specified address or post its contents on the Forum.

6.2 Contacting JP Software

You can contact JP Software at the following addresses and numbers. Our normal business hours are 9:00 AM to 5:00 PM weekdays, Eastern US time (except holidays).

Address: **JP Software Inc.**
P.O. Box 328
Chestertown, MD 21620
USA

Main number: **(410) 810-8818**
Fax: **(410) 646-0026**
Order Line: **(410) 810-8819**

Online: Web site: <http://jpsoft.com/>
FTP site: <ftp://jpsoft.com>
Sales / Customer Service: sales@jpsoft.com

Technical Support: Standard (no-charge) support: Available via our online **Support Forum**, accessible from the support area of our web site.

See [Technical Support](#)^[26] for additional details, and for information on our paid support option.

7 Registration

There are no separate **trial** and **registered** versions of our products. Without registration, a trial version is fully functional for 30 days of use.

At any time you can apply your current personal registration information to a trial version in order to turn it into a registered product. Use the [Help/About](#)^[10] menu entry to verify the status of the copy you are currently running.

When you purchase a new or upgrade copy of **TCI**, you will receive an email with your name and registration key. Start **TCI**, select the Options/Configure TCI menu option and select the **Register** tab, and enter the registration information exactly as you received it in the email. Remember to save your registration key in a safe place in case you need to reinstall. If you have lost your registration key, you can request a replacement by contacting JP Software at sales@jpsoft.com, or at one of the addresses listed at the start of this file.

8 Order Form

You can at any time apply your personal [registration information](#)^[28] to a **trial** version in order to turn it into a **registered** version.

To order or upgrade any of our products, visit our web site and secure online store or email /fax us a copy of the form shown below. See [Contacting JP Software](#)^[28] for our address and phone/fax numbers.

JP Software
[2006/7]
P.O. Box 328
sales@jpsoft.com
Chestertown, MD 21620 USA
810-0026

Standard Order Form

email to
or fax to (410)

This order form covers our standard product line: new copies, upgrades, our CD Suite, and manuals.

For multi-system licenses, more shipping information, and answers to other ordering questions, see <http://jpsoft.com>. If you need additional information, or want to order directly from our web site:

For	See
-----	-----
On-line order entry	http://jpsoft.com/
Email orders / inquiries	sales@jpsoft.com
Phone orders / inquiries	(410) 810-8818
Fax orders	(410) 810-0026
US / international dealer list	http://jpsoft.com/

=====

Name (first, last) _____

Company _____

Address _____

City, State/Prov, Post Code _____

Country _____

Phone _____ Fax _____

E-Mail _____

(Will only be used by JP Software to notify you of upgrades or contact you with other information related to our products.)

Register products to: Company Individual

Where did you hear about our products?

=====

New Copies and Product Packs

4NT (\$74.95)

Total Price

9 Copyright & Version

TCI 1.01 for Microsoft Windows XP / 2003
Software: Copyright © 2006, Rex Conn and JP Software Inc.
All Rights Reserved.

Version 1.01 Help System
Help text: Copyright © 2006 JP Software Inc.
All Rights Reserved.

TCI Language.dll translations by
French Christian Albaret
German Hans-Peter Grözing

We gratefully acknowledge the contributions of Roger Byrne, Vincent Fatica and our other users.

This help material was last revised on Friday, September 29, 2006

TCI is a trademark of JP Software Inc. 4NT is JP Software Inc.'s trademark for its family of character-mode command processors. Take Command® is a registered trademark of JP Software Inc. JP Software, jpssoft.com, and all JP Software designs and logos are also trademarks of JP Software Inc. Other product and company names are trademarks of their respective owners.

Index

- . -

.INI 15
.INI files 15

- 4 -

4NT.EXE 18

- 6 -

64-bit Windows 23

- A -

Apps Menu 9

- C -

Changing Tabs 6
Clipboard 13
CMD.EXE 18
Color Options Tab 25
Colors 21
COMSPEC 18
Configuration 15
Configuration Dialog 23
ConsoleAltKey 18
ConsoleBufferRows 18
ConsoleMouse 18
Contact 28
Copying text 13
Copyright 31
Creating Tabs 6
Cursor 18

- D -

Desktop integration 4
Dialogs 10
Directives 16
Drag and drop 14

- E -

Edit Menu 8
Explorer 4

- F -

File Menu 8
Font 23

- H -

Help Menu 10
Highlighting text 13

- I -

IBeamCursor 18
InactiveTransparency 19
INIQuery 19
Initialization 15
Initialization file 16
Initialization files 15

- J -

JP Software 28

- K -

Key Codes 14
Keys 14

- L -

LeftAltKey 19
LinuxSelection 19

- M -

Menus 7
MultiLineTabs 19

- O -

Online Help 25
Options Menu 9
Order Form 29
Ordering TCI 29
Overview 2

- R -

Registering TCI 28
Registration 25, 28
Resizing 14
RightAltKey 20
Run Program Dialog 11

- S -

Screen Buffer 13
ScreenColumns 20
ScreenRows 20
Scrollback Buffer 13
ScrollWrap 20
Shortcuts 4
Startup 2
Startup command 3
Startup options 3
Status Bar 12, 20
StatusBarOn 20
StatusBarText 20
StdColors 21
System Tray 22
SysWOW64 23

- T -

TabIcons 21
Tabs 6
Tabs Menu 9
Tabs Options 24
TabSize 21
TCI Interface 5
TCI Menus 7
TCI options 3
TCI parameters 3

TCI Window 6
TCI.chm 25
TCI.GPF 26
TCI.INI 15, 17
Technical Support 26
Tool Bar 12, 21
Tool Bar Dialog 11
ToolBarOn 21
ToolBarText 21
Transparency 19, 22
Tray 22
Troubleshooting 26

- V -

Version 31

- W -

Window Options Tab 23
Window resizing 14
WindowHeight 22
Windows 64 23
WindowState 22
WindowWidth 23
WindowX 22
Wow64FsRedirection 23

- X -

x64 23